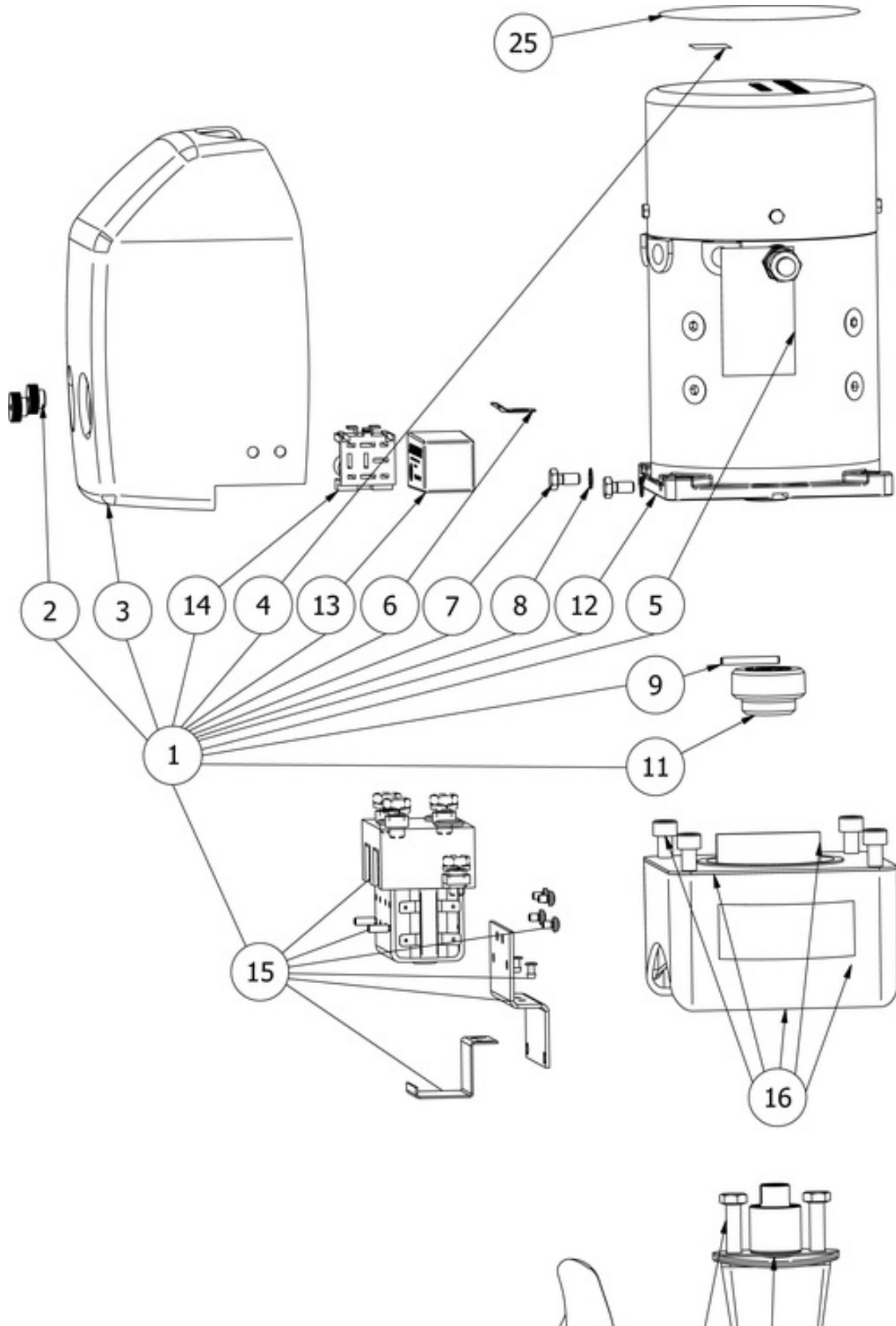
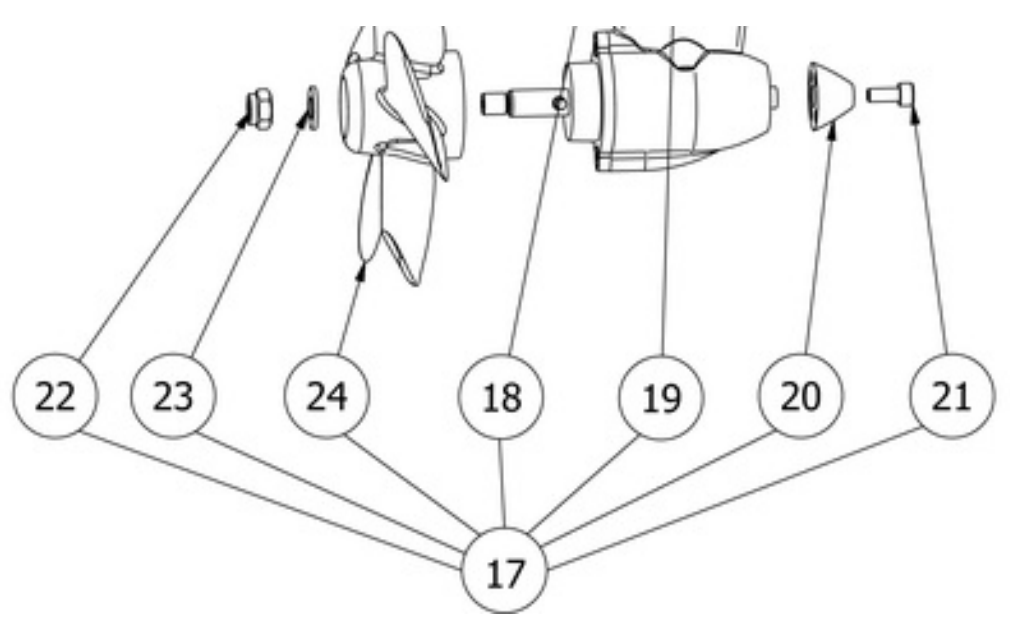


SE50/140S-12V - SE50 Tunnel bow thruster, 12V

Spare parts (valid from 2020-08-27)





#	Description	Product
1	Motor SE50 12V	SM-125076-01
2	Plastic nut	SM-120884
3	Relay cover SE60S	01-02-040-100
4	Label	01-02-030-112
5	Label termination	SM-102258
6	Contact	RK0008 - Cable lugs for SE60-170
7	DIN 933 - M6 x 12	10 1225 - Bolt M6 x 12 6kt
8	DIN 6798 - A 6.4	6 1268 - Spring washer
9	ISO 8734 - 4 x 32 - A	141285 - Motor drive pin 4x32mm SE50/60S2
11	Coupling SE50 / 60	140992 - Flexible coupling SE50/60S2
12	Electric motor	SM152335-02
13	Delay relay	01-02-080-118
14	Wireing	01-02-080-126
15	Relay mounted	SM-125035
16	Engine bracket SE50	SM-125075
17	SE50 gearbox complete	5 0600 - Complete gearleg SE50, prefilled and sealed
18	DIN 931-1 - M8 x 40	DIN 931-1 - M8 x 40
19	Gasket neck SE50	141261 - Gasket for gearleg installation in tunnel, SE50
20	Anode	01-02-030-108
21	DIN 912 - M5 x 12	3 1172 - Bolt M5 x 12 Unbraco
22	DIN 985 - M8x1.25	3 1250 - Lock nut
23	DIN 125 - A 8.4	208125 - Washer DIN125A M8 A4 (SB)
24	Propeller Ø137mm	01-02-050-103
25	Label	SM-120822

The installer alone has responsibility for the installation of the spare parts. Side-Power only warranty the spare parts supplied only.

The information given in the document was correct at the time it was published. However, Sleipner Motor AS can not accept liability for any inaccuracies or omissions it may contain. Continuous product improvement may change the product specifications without notice. Therefore, Sleipner Motor AS can not accept liability for any possible differences between product and document.